

# Cadcorp SIS Map Viewer



## The unrivalled viewer for navigating, theming and outputting geospatial data

Cadcorp SIS—Spatial Information System is a family of end user and developer Windows based GIS products. Map Viewer is the entry level product in the Cadcorp SIS range and offers the casual user a versatile tool for swiftly and easily viewing, theming, and printing a wealth of different types of map and database data.

### Open a vast range of data types

Via “plug-in” datasets, Cadcorp SIS Map Viewer can access an impressive array of map and database data straight out of the box.

Map Viewer ships with more than 45 different plug-ins to support all of the popular GIS and database formats including ArcView shapefiles, Ordnance Survey NTF, MapInfo MID, AutoCAD DWG and DXF, Oracle 8i Spatial and many others. In addition numerous additional plug-ins are made available by Cadcorp as they become available. These can be easily slotted into Map Viewer.

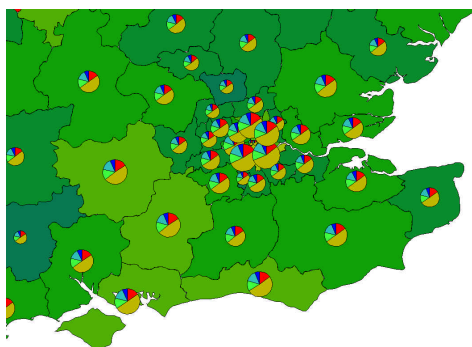
### Navigate with ease

Being a Windows based application, navigation commands such as pan, zoom-in, zoom-out and many others are easily found and used via pull-down menus and toolbars. Map Viewer also features unique Cadcorp SIS tools; MapTips and the Roamer.

MapTips are a dynamic view of data attributes as you pass over them with your mouse cursor.

The Roamer is a unique magnifying glass viewer which enlarges just the area of the map the mouse is passing.

### Thematic mapping



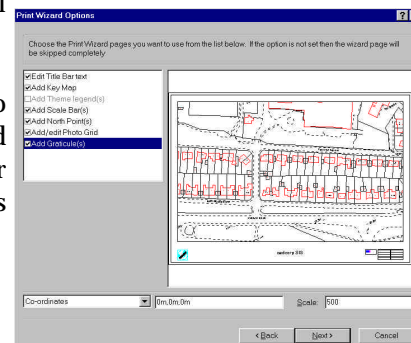
As well as viewing and navigating, you can display map information to present patterns in your data. Using thematic mapping you can produce maps that include:

- Bar Charts
- Pie Charts
- Dot Densities
- Graduated Symbols
- Labelling
- Individual values
- Range values

Control of your colours, line styles, line weights and legend is easily achieved.

### Wizard driven output

Map Viewer includes a step-by-step print Wizard to simplify producing exactly the map you want. The easy to use process covers titles, north points and legends assuring a complete professional looking map.



Map Viewer also supports linking and embedding to other Microsoft Windows documents.

### Summary

Map Viewer has the look and feel of its more powerful siblings in the Cadcorp SIS range. Whilst an entry-level package, it still offers the flexibility to view all data available to Cadcorp SIS in an easy to use Windows environment. Combined with thematic mapping capability and the powerful print Wizard, Map Viewer presents the casual user all the functionality they should need in either a departmental or corporate level setting.

computer aided development corporation



Cadcorp  
Sterling Court, Norton Road  
Stevenage, Herts, SG1 2JY

Tel: +44 (0) 1438 747996  
Fax: +44 (0) 1438 747997  
[www.cadcorp.com](http://www.cadcorp.com)