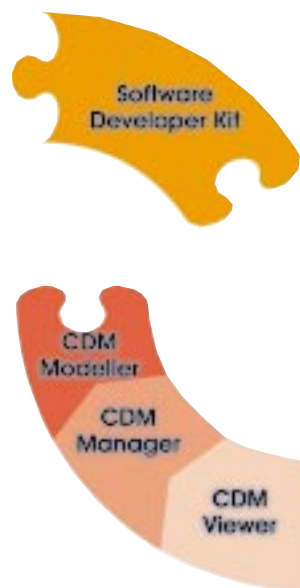


Cadcorp SIS Software Development Kit (SDK)

Cadcorp SIS Control Development Modules (CDM)



The power behind rapid GIS application development



Cadcorp SIS - Spatial Information System - ActiveX applications are developed and tested using the Cadcorp SIS Software Developer Kit (SDK). Runtime licences are deployed using the Cadcorp SIS Control Development Modules (CDM) at either the Viewer, Manager or Modeller level.

The Cadcorp SIS Software Developer Kit (SDK) is an ActiveX development environment offering

the full functionality of the following Cadcorp SIS “off-the-shelf” products: Map Viewer, Map Manager and Map Modeller.

Unlike low-level component technology where most functionality must be built from scratch, the SDK is a high-level development environment with many pre-built assemblies included as standard. This allows rapid application development and deployment.

Since 1996 several hundred developers have deployed thousands of application licences throughout the world. These solutions cover planning, land charges, development control, ambulance route planning, police applications, storm water drainage, broadcast transmission planning, agricultural land usage and many others.



Building an application with the SDK is made simple with the inclusion of standard Cadcorp SIS interface assemblies such as the dialog boxes, Wizards and full right mouse button

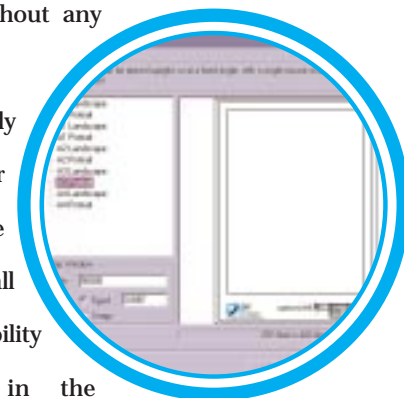
support. These high-level interface components greatly simplify the programming task.

This Selection Dialog is a typical example of a pre-built dialog avail-

able to an application without any need for programming.

The Print Wizard, an extremely versatile end user tool for formatting maps, can be easily invoked and offers all the sophistication and flexibility of the Print Wizard in the “off-the-shelf” Cadcorp SIS products.

Programming is straightforward and familiar using ActiveX supported languages. Developers commonly use Visual Basic, Visual C++, PowerBuilder and Delphi.



Runtime licencing - Cadcorp SIS Control Development Modules (CDM)

Control Development Modules allow a developer to deploy an application with full control over the level of functionality and the licensing of users. Developers may choose the level of capability their application offers by distributing one of the three available CDMs:

- Cadcorp SIS CDM Modeller – professional GIS analysis and advanced geometric editing
- Cadcorp SIS CDM Manager – thematic mapping, projection control, query and basic editing
- Cadcorp SIS CDM Viewer – extensive GIS data viewing, thematics



Open GIS

Cadcorp invests significant time and resources in the activities of the Open GIS Consortium. This is an international initiative aimed at defining a comprehensive suite of open interface specifications for GIS.

Cadcorp SIS Software Development Kit (SDK)

Cadcorp SIS Control Development Modules (CDM)



Cadcorp SIS is certified "OpenGIS conformant"

for GIS vector data structures (Simple Features) and embraces raster image handling (Grid Coverages) and Coordinate Transformation.



Cadcorp has an ongoing commitment to OpenGIS - its aims and objectives.

The Cadcorp SIS Product Family

Cadcorp SIS is a comprehensive suite of GIS products, all based around a single software engine.



- Cadcorp SIS Map Viewer
- Cadcorp SIS Map Manager
- Cadcorp SIS Map Editor.
- Cadcorp SIS Map Modeller
- Cadcorp SIS CDM Viewer
- Cadcorp SIS CDM Manager
- Cadcorp SIS CDM Modeller
- Cadcorp SIS Software Development Kit (SDK)
- Cadcorp SIS Internet Developer Kit (IDK)
- Cadcorp SIS Active Server Component (ASC)
- Cadcorp SIS Enterprise Developer Kit (EDK)

Cadcorp SIS Map Viewer key features	●
Cadcorp SIS Map Manager key features	●
Cadcorp SIS Map Editor key features	●
Cadcorp SIS Map Modeller key features	●

Over 45 GIS and database formats supported	●	●	●	●
Database links including Oracle 8i, Microsoft SQL Server, Excel... (via OLE2)	●	●	●	●
Links to Word, Excel... (via OLE2)	●	●	●	●
Print wizards	●	●	●	●
Thematic mapping	●	●	●	●
OpenGIS conformant for simple features	●	●	●	●
Programmers version available (ActiveX)	●	●	●	●
250 Co-ordinate systems and transformations		●	●	●
Data creation and editing		●	●	●
Customisation using MS Visual Basic		●	●	●
Topology creation and editing			●	●
Advanced data creation and editing			●	●
Advanced thematic mapping				●
Creation of 3D views and terrains				●

Summary

- Create and test applications using the Cadcorp SIS Software Developer Kit (SDK)
- Deploy runtime licences using the Cadcorp SIS Control Development Modules (CDM) at either the Viewer, Manager or Modeller level
- Harness the power of pre-built assemblies that are included in the SDK as standard. These include Wizards, Overlay Dialogs and Print Templates
- Use standard ActiveX technology such as Visual Basic, Delphi, C++ and PowerBuilder
- Proven success worldwide

computer aided development corporation



Cadcorp
Sterling Court, Norton Road
Stevenage, Herts, SG1 2JY

Tel: +44 (0) 1438 747996
Fax: +44 (0) 1438 747997
www.cadcorp.com